

## Reflection and Prayer

We need to re-connect with the natural world about us. Our modern way of living insulates us from the changing seasons, from heat and cold, and from where our food comes from.

Our worship ought to re-connect us with the natural world, God's creation.

It is our failure to remember we are made from the dust of the earth, and to dust we will return, that has caused the crisis that humanity faces today.

Creation is crying out because of the harm we have inflicted on her.



So let us give thanks to God, our creator, and remember, as Martin Luther said, "The Gospel is not only found in the pages of the Bible, but is written in the trees and the flowers, in nature all around us"

*Jesus said, "Everyone who drinks of this water will be thirsty again, but those who drink of the water that I will give them will never be thirsty. The water that I will give will become in them a spring of water gushing up to eternal life." (John chapter 4 verses 13 & 14)*

We thank you, Father, for your gift of water which brings life and growth to all things.

We bless you for the rains which water the earth and enable the crops to grow; for the streams, rivers and wells which provide water for human communities.

Help us not to take this gift for granted, but to use it with care and treat it with the respect your gifts deserve.

Amen.

*(prayer for the blessing of Shobrooke Holy Well)*

Almighty God, we thank you for this well and for the provision of water it represents.

May the land of this parish be fruitful, may its cattle flourish, and may its people be healthy.

With thanksgiving for the harvest you give, we ask you to bless this well for the use of the parish in the name of the Father, and of the Son, and of the Holy Spirit. Amen.

Amen.

Share your journey with us [#DevonPilgrim](#)

 [@pilgrimagedevon](#)  [@PilgrimageDevon](#)  [Devon Pilgrim](#) [devonpilgrim.org.uk](http://devonpilgrim.org.uk)

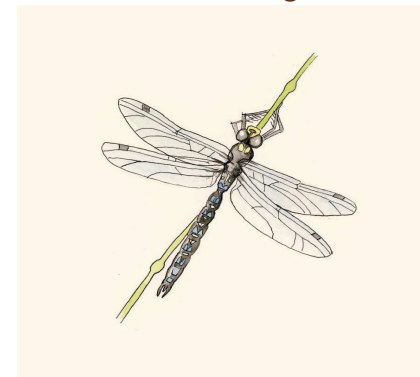
Copyright © 2021 Devon Pilgrim  
Permission granted to reproduce for personal use only. Commercial copying, hiring, lending is prohibited.



St Boniface Way  
wander and wonder

## STAGE 2

St Swithun's Church, Shobrooke  
to Church of St Cyr and St Julitta,  
Newton St Cyres



May God the Father who created you,  
guide your footsteps.

May God the Son who redeemed you,  
share your journey.

May God the Holy Spirit who sanctifies you,  
lead you on life's pilgrimage.

# STAGE 2

Shobrooke to Newton St Cyres



After visiting St Swithun's Church, turn left and follow the path back to the road. Go across the road and turn left in front of Barton Farm. Continue along Church Lane for 100m and you will see the Holy Well on your right.

*You may want to pause here and use the prayer for the blessing of the well found overleaf.*

Retrace your footsteps and enter the field on your left. Of the three paths, take the rightmost one. As you approach a large tree, continue straight along the public footpath which is signposted. The path will lead you past a large tree with a tyre swing, then follow the path as it bends round to the right, ignoring the first two kissing gates on the left. Continue until you meet a large gate with kissing gate to the left, and enter into the next field and continue south for 500m. You will then see a kissing gate in the far left corner of the field.

Exit the field through the kissing gate and over a footbridge into a copse of trees. You will cross a second footbridge and then continue south with Shobrooke Lake to your right.

After ¼ mile, you will approach the road at Shobrooke Mill Farm. Take care on the road as you continue in the same direction, up the hill.

After two left hand bends, in ¼ miles, take the public footpath to your right.

You will immediately see a small group of trees with paths on either side - take the right path down the small slope.

After you pass through a gate, bear left up the hill and aim for another small gate.

Head straight across the brow of the hill and you will see a gate down the slope directly ahead of you.

Follow the footpath to the right which bears left after 50m before reaching the road via another gate.

Turn left and take care on the road as you continue for 1/3 miles to Wyke Cross. Here you will see a signpost on the right for Newton St Cyres

Follow this, turning right, and continue for 0.6 miles, when you will reach The Beer Engine pub at Newton St Cyres station.

*Flower lovers might wish to visit the station to view the glorious planters along the platform.*

Turn right before the train station sign, and follow the road round to the recreational ground.

Continue south along Station Road for ½ mile as you cross the River Creedy and pass Newton St Cyres Primary School.

When Station Road intersects with the A377, cross the junction to the road opposite.

*The A377 is a very busy road, take care when crossing.*

The beautiful church of St Cyr and St Julitta can be found hidden in the trees ahead.

